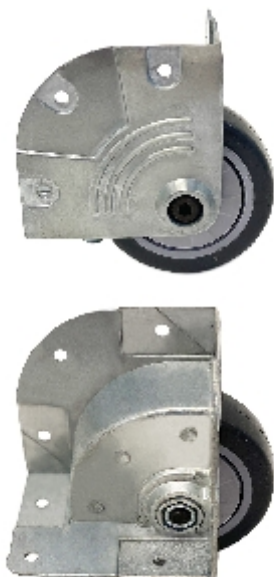



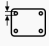
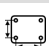




Fixe:

118a 820 799



Caractéristiques techniques

Diamètre		76 mm
Largeur de voie		25 mm
Hauteur totale		104,4 mm
Dimensions de la platine		81,4 x 65,3 mm
Diamètre des trous de fixation		5,2 mm
Entraxe des trous de fixation		34 x 50 + 40,71 x 40,71 mm
Capacité de charge		50 kg
Poids		430 g