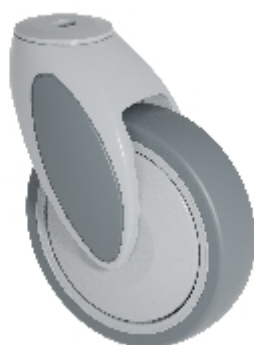


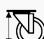






Pivotant:

KSL2-51C-L12 (VIVAX 2.0)



Caractéristiques techniques

Diamètre		125 mm
Largeur de roue		32 mm
Hauteur totale		161 mm
Déport		46 mm
Ø-du trou central		12 mm
Capacité de charge		100 kg
Poids		470 g

Description technique

chappe pivotante en nylon de haute qualité
résistant aux chocs

pivot avec roulement à billes et étanchéité profonde



Roue

roues noyau en polypropylène

bandage en caoutchou thermoplastique (TPE,
Shore A 87)

protection avec pare-fils

roulement à billes

non huilant