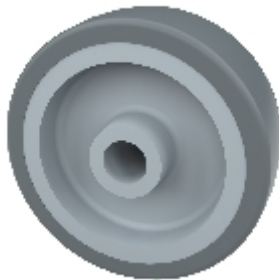







Roue:

31G-12-29



## Caractéristiques techniques

Diamètre		75 mm
Largeur de voie		25 mm
Largeur du moyeu		28,8 mm
Diamètre de l'alésage		12 mm
Capacité de charge		60 kg



## Roue

roues noyau en polypropylène

bandage en caoutchou thermoplastique (TPE, Shore A 87)

palier lisse

non huilant